



18th Annual SoCalBio Conference

11 . 4 . 2016 -- Hilton Long Beach, CA

Thanks to Pamphlet Sponsor



Bench.

The right leader means everything.

Contents

Opening Page	3
About SoCalBio	4
SoCalBio Company Screening, Selection & Mentoring Committee	6
List of Emerging Companies Selected to Make Business Presentations	8
Floor Plan	11
Agenda at a Glance	12
Detailed Agenda	13
Biographies of BioElectric Medicine Panel Participants	21
Biographies of Smarter Healthcare System Panel Participants	26
List of Sponsors and Exhibitors	30



18th SoCalBio Conference

November 4, 2016
Hilton Long Beach, California

Chairs



Jonathan Lasch, PhD
Executive Director
AMI - USC



Michael Wise
Partner
Perkins Coie

Organized by



Serving Southern California's biotech and medical device communities
"Your Success Is Our Business"

617 S. Olive Street, Suite 700, Los Angeles, California 90014
800-418-7079 – scbc@socalbio.org – www.socalbio.org



18th Annual SoCalBio Conference

November 4, 2016 . Hilton Long Beach, CA

About SoCalBio

Advocacy

Business Development

Talent Nurturing

Networking

Since its founding 20 years ago as part of the Rebuild LA initiative, the Southern California Biomedical Council (SoCalBio) has supported growth of bioscience-related industries across the Greater Los Angeles region.

An organization built by and for L.A.-area entrepreneurs, SoCalBio pursues ongoing programs that help local firms gain access to capital, potential partners and business support services. The organization's marquee event – the annual SoCalBio

Conference -- has grown to become the region's premier showcase for emerging life-science companies and technologies. SoCalBio is also tasked with promoting technology transfer and workforce training, while informing policy makers and the public at-large about the benefits of the region's bioscience-related industries.

In addition, SoCalBio delivers value to its members through exclusive benefits essential to running a bioscience or digital health company. Such benefits include a comprehensive group purchasing program that enables members to conserve cash and enjoy significant discounts on everything from lab/office supplies and waste management to insurance, PR news distribution and shipping.

SoCalBio helped develop the watershed Battelle Master Plan for growing Los Angeles County's biotech cluster and its members are more committed than ever to helping build support for the plan among local stakeholders and policymakers. SoCalBio is proud to serve as the focal point for industry-driven partnerships to support the plan based on local resources embedded within the community.



18th Annual SoCalBio Conference

November 4, 2016 . Hilton Long Beach, CA

SoCalBio looks forward to beginning its third decade as the voice of the bioscience and digital health communities across Greater Los Angeles. In partnership with local, state and national organizations (such as California Technology Council, Biotechnology Innovation Organization and Medical Device Manufacturing Association), SoCalBio embraces its role as the region's primary advocate and watchdog for the issues that impact local biotech, medtech, diagnostic and digital health communities.

SoCalBio Contacts

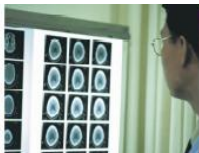


Ahmed A. Enany, President & CEO
800-418-7079 ext. 1 -- enany@socalbio.org

Walid Sabbagh, Jr., PhD
VP, Business Development
800-418-7079 ext. 2 – walid@socalbio.org

A. Stephen Dahms, PhD
Workforce Development
dahms@socalbio.org

Brandon Dumlao
Operations Manager
800-418-7079 ext. 3 – Brandon@socalbio.org



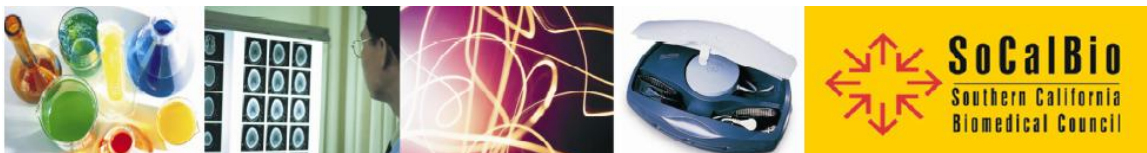
18th Annual SoCalBio Conference

November 4, 2016 . Hilton Long Beach, CA

Special thanks to the Following Business Professionals for Assisting in Emerging Company Screening, Selection and Mentoring



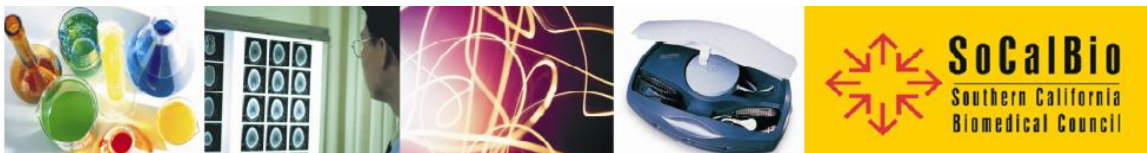
- **Roger Anderson**, PhD, Biotech Consultant
- **Peter Blaisdell**, PhD, Member of the Scientific Advisory Board, Meditope Biosciences
- **George Colindres**, Senior Counsel, Perkins Coie LLP, Los Angeles
- **William Dolphin**, President, Omedix
- **Elliot Friedman**, Chairman, Qi Jian Funds
- **Steve Goldman**, President, World Wide Mind
- **Zafiris Gourgouliatos**, PhD, President, Leilux, Inc.
- **Earle Hager**, Managing Partner, The Neutrino Donut, LLC
- **David Hood**, President & CEO, DH3 & Associates
- **Wendie Johnston**, PhD, Exe. Director, LA/Orange County Biotech Center
- **Jerry Joseph**, Verity Associates
- **Jerry Knotts**, President, Central Coast Venture Forum
- **Richard Koffler**, Founder, Greenwings Biomedical



18th Annual SoCalBio Conference

November 4, 2016 . Hilton Long Beach, CA

- **Mohammad Kondri, MPH, MBA**, Trade Commissioner, Life Sciences & Medtech, Consulate General of Canada
- **Gary Lazar, MD**, President & CEO, Paganini Biopharma
- **Hal Lieberman**, Sr. Associate, Exceleration Management
- **Thomas Lobl, PhD**, Entrepreneur-in-Residence, AMI-USC
- **Ashot Petrossian, PhD**, Principal Manager, GXP Consultants Alliance Inc.
- **Michael Reilly**, VP of Business Development, Integrity Bio Inc.
- **Mark Siegfried**, Business Development, Moss Adams
- **Fabio Simi**, Director, Life Sciences Practice, AON
- **Monica Alfaro Welling**, Managing Partner, Atheln, Inc.
- **John Warner, MD**, Advisor, Adaptive Healthcare
- **Michael Wise**, Partner, Perkins Coie
- **Wanwan Yang, PhD**, Chief Investment Officer, HUAQI Capital Inc.



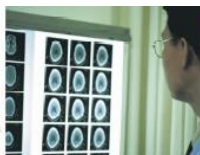
18th Annual SoCalBio Conference

November 4, 2016 . Hilton Long Beach, CA

Companies Selected to Make Business Presentation during the SoCalBio Conference

This SoCalBio Conference will showcase the following emerging biotech, device, diagnostics and digital health companies:

1. **3iDx** (Developing an instrument that can provide clear identification of a specific microbe strain, including AMR strains, within an hour)
2. **Advanced Prenatal Therapeutics, Inc.** (An Irvine-based startup using targeted apheresis to treat preeclampsia)
3. **ABL Denim** (A Los Angeles company that makes clothing for people with disabilities that's easier to dress in and wear more comfortably by adding functional features and technology to fashionable jeans)
4. **Afecta Pharmaceuticals** (An Irvine company using 2D/3D computer aided molecular screening to redesign existing drug molecules and "fit" them to target drug-able proteins, metabolic pathways, diseases, and/or clinical patient subsets)
5. **Airware, Inc.** (A Goleta company developing a non-invasive, optical monitoring device to sense interstitial glucose in the skin)
6. **AmberSand Biopharmaceuticals** (Based in Westlake Village, AmberSand is developing a platform technology that enhances paracellular transport by hosting drugs in a flexible micelle delivery vehicle and solubilizing the skin's lipid barrier with chemical penetration enhancers)
7. **Auritec Pharmaceuticals** (A Pasadena Collaborative alumnus specializing in extended-release drug delivery systems)
8. **BioVinc** (A USC spinoff developing bone targeted therapeutics & diagnostics)
9. **Care3** (A Los Angeles-based firm developing a digital health platform for care coordination)



18th Annual SoCalBio Conference

November 4, 2016 . Hilton Long Beach, CA

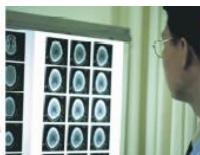
10. **CureMatch** (A San Diego-based digital health company developing a computational system for decision support in personalized cancer medicine)
11. **Cytolumina** (A UCLA-spinoff -- now based in Agoura Hills -- that is developing a liquid biopsy platform by capturing circulating cancer cells)
12. **Delta Brain Inc.** (A Los Angeles machine learning firm developing applications in medicine)
13. **Deton Corp.** (An early stage company incubated by the Pasadena Collaborative. Deton is developing a sample collection device for lower respiratory infections)
14. **Episona** (Based in Glendale, Episona is commercializing personalized diagnostics for male infertility using epigenetics)
15. **Eyes 4 Lives, Inc.** (A Long Beach company seeking to minimize digital eye strain and the progression of nearsightedness by correcting improper electronic usage habits)
16. **GNADX** (Commercializing a novel iPad-controlled minicube PCR machine)
17. **Hillhurst Biopharmaceuticals** (A Montrose-based biotech targeting debilitating inflammation)
18. **Kumba Health** (A Beverly Hills-based digital health company developing a marketplace where providers and patients can connect)
19. **Mastoscopia** (A USC spinoff developing a novel multimodal ultrasound tomography for breast cancer detection)
20. **Meditope Biosciences** (A Pasadena-based, City of Hope-spinoff that is developing antibody-drug conjugates for oncological applications)
21. **NanoValent Pharmaceuticals** (A Children's Hospital Los Angeles spinoff using a nanoparticle delivery system to target cancer)
22. **NeuroCore** (An early-stage company developing a rapid, effective, outpatient platform for treating major depressions)
23. **NeuroRecovery Technologies** (A UCLA spinoff developing devices for restoring movement in patients with paralysis)



18th Annual SoCalBio Conference

November 4, 2016 . Hilton Long Beach, CA

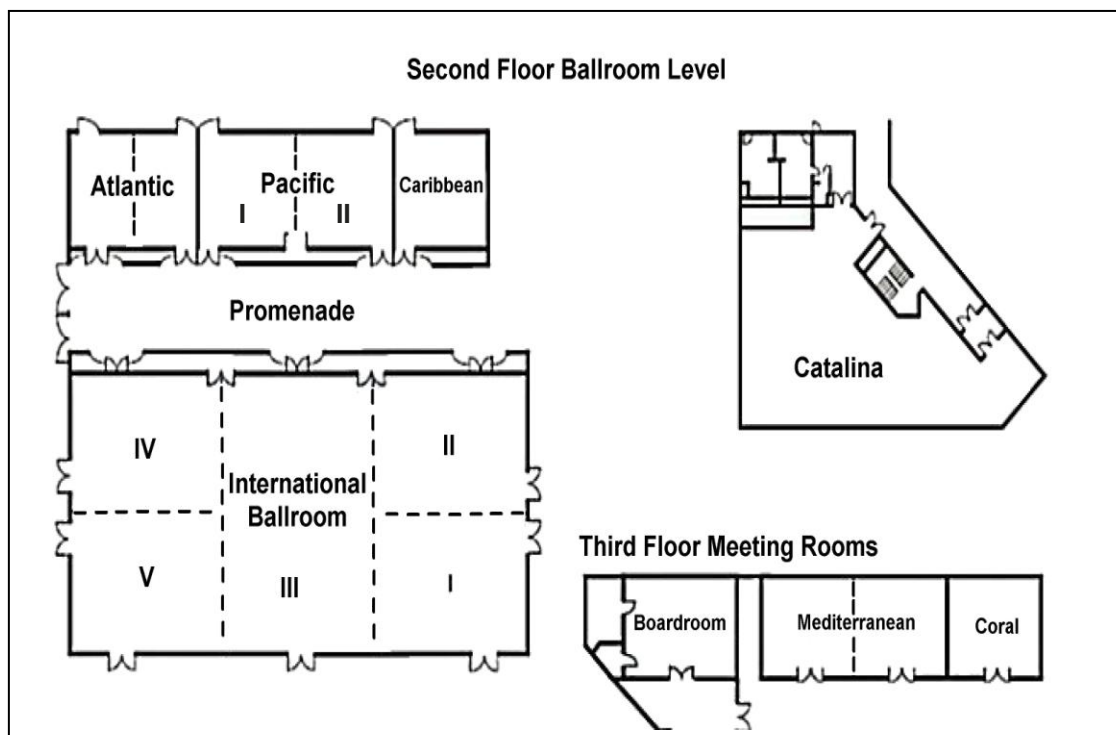
24. **Onco Therapies** (A Pasadena Collaborative firm developing a technology to remove FoxP3+ regulatory T cells and inhibit tumor growth)
25. **Oxeia Biopharmaceuticals** (A San Diego-company researching therapeutics for brain concussion)
26. **PersonalRN** (A Hermosa Beach-based digital health company offering personal digital RN solution that begins on admission and stays throughout the continuum of care providing personalized information for patients and their families)
27. **PhenoTraits** (A Hermosa Beach company developing analytics to predict drug non-adherence and identify at-risk populations)
28. **Protomer Technologies** (A pre-clinical stage biotech focused on metabolic diseases)
29. **Quantason** (A Los Angeles-based company developing a dual-mode, hybrid, ultrasound-based platform for breast screening and follow-up monitoring)
30. **SilverGens** (A Canoga Park company designing a virtual care platform called the eNURZ to increase adherence to long-term therapies in a home setting)
31. **STORM** (Based in San Diego, STORM is developing a collaborative informatics environment that enables community-based hospitals to apply precision medicine to personalized cancer care for their patients)
32. **TreThera** (A UCLA-spinoff developing a targeted metabolic pathway therapy that involves using a rationally-designed combination of two or three drugs from the very start for cancer treatment)



18th Annual SoCalBio Conference

November 4, 2016 . Hilton Long Beach, CA

Floor Plan



Please keep in mind that all conference activities, except emerging company presentations and investor breakouts are taking place at the International Ballroom.

Emerging company presentations and investor breakouts are taking place at the following:

- **Atlantic**
- **Pacific I**
- **Pacific II**



18th Annual SoCalBio Conference

November 4, 2016 . Hilton Long Beach, CA

Agenda at a Glance

7:00 AM	Registration and Breakfast
8:00 AM	Introductions and Acknowledgement of Sponsors
8:15 AM	Morning Keynote Presentation
9:00 AM	Morning Plenary Session on Bioelectric Medicine
10:30 AM	Break
11:00 AM	Emerging Company Presentations in Three Parallel Tracks
12:30 PM	Luncheon and Industry Updates
1:00 PM	Luncheon Plenary Session on Building a Smarter Healthcare System
2:30 PM	Break
2:45 PM	Emerging Company Presentations in Three Parallel Tracks
4:15 PM	Break
4:30 PM	Investor Breakouts in Two Parallel
5:30 PM	Closing Reception
7:00 PM	Conference Adjourns



18th Annual SoCalBio Conference

November 4, 2016 . Hilton Long Beach, CA

Agenda

7:00 AM Breakfast (International Ballroom)

8:00 AM Introductions and Welcoming Remarks by

- **Robert Greenberg, MD, PhD**, Chairman, Second Sight Medical Products & Chairman of the Board, SoCalBio
- **Ahmed Enany**, President & CEO, SoCalBio

8:15 AM Morning Keynote Presentation (International Ballroom):

"Advancing Medical Innovation through Public Policy"

By



James Greenwood
President & CEO

Biotechnology Innovation Organization (BIO)

BIO is a world class advocacy organization playing a leading role in shaping public policy on a variety of fronts critical to the success of the biotechnology industry at the state and national levels as well as internationally.

The organization represents more than 1,200 biotechnology companies, academic institutions, state biotechnology centers and related organizations across the United States and in more than 30 other nations. BIO members are involved in the research and development of innovative healthcare, agricultural, industrial and environmental biotechnology products. Since his appointment in January of 2005, he has markedly enhanced the trade association's capacity – increasing both its staff and budget by nearly fifty percent.

Mr. Greenwood represented Pennsylvania's Eighth District in the U.S. House of Representatives from January 1993 through January 2005. Prior to his election to Congress, Mr. Greenwood served six years in the Pennsylvania General Assembly (1981-86) and six years in the Pennsylvania Senate (1987-1992).

Mr. Greenwood graduated from Dickinson College in 1973 with a BA in Sociology. From 1977 until 1980, he worked as a caseworker with abused and neglected children at the Bucks County Children and Youth Social Service Agency.



18th Annual SoCalBio Conference

November 4, 2016 . Hilton Long Beach, CA

9:00 AM Morning Plenary Session Featuring Emerging Local Clusters (International Ballroom):

The Promise of Bioelectric Medicine

Greater Los Angeles is home to an emerging cluster of bioelectric medicine research organizations and companies, such as the Alfred Mann Foundation of Biomedical Engineering (Santa Clarita), Boston Scientific Neuromodulation (Santa Clarita), Axonics (Irvine), Valencia Technologies (Valencia), SetPoint Medical (Valencia) and NeuroSigma (West Los Angeles). These organizations are exploring technological frontiers where biology meets electronics. They all aspire to develop devices that use the principles of biocomputing and the architecture of biological electronics to regulate the molecular targets underlying disease and deliver therapies for such conditions as inflammation, hypertension and cancer; and even reverse paralysis and blindness.

This plenary session will explore

- (1) The latest advances in bioelectric medicine, including the formation of Galvani Bioelectronics, a \$700 million bioelectric joint venture between GlaxoSmithKline and Google. This partnership seeks to blend Glaxo's knowledge of drug discovery with Google's expertise in computing for clinical applications.
- (2) How bioelectric medicine can result in outcomes superior to drugs in terms of efficacy, safety, and cost, without significant side effects.
- (3) What is required to bring bioelectric medicine faster to the patient's bedside
- (4) How to grow and maintain the status of Los Angeles as the epicenter of bioelectric medicine.

- **Moderator:**

- **Barry Keenan**, PhD, CTO, CliniFlow Technologies

- **Panelists:**

- **Robert Greenberg**, MD, PhD, Chairman, Second Sight Medical Products
 - **Roy Katso**, Director Open Innovation & Funding Partnerships, GlaxoSmithKline
 - **Victor Pikov**, PhD, Research Platforms Director, Bioelectronics R&D, GlaxoSmithKline
 - **Jerry Schloffman**, Chief of Clinical Operations, Valencia Technologies

10:30 AM Break



18th Annual SoCalBio Conference

November 4, 2016 . Hilton Long Beach, CA

11:00 AM Emerging Company Presentations:

Group I

	<u>Track 1: Atlantic</u> Moderators Peter Blaisdell , PhD, Member of the Scientific Advisory Board, Meditope Biosciences Yingli Wang , PhD, Attorney, Perkins Coie	<u>Track 2: Pacific I</u> Moderators Gary Lazar , MD, President & CEO, Paganini Pharmaceuticals George Colindres , Attorney, Perkins Coie	<u>Track 3: Pacific II</u> Moderators Josue Villalta , Partner, Knobbe Martens Fabio Simi , Director, Life Science Practice, AON
11:00	AmberSand Biopharmaceuticals (Developing a platform technology that enhances para-cellular transport by hosting drugs in a flexible micelle delivery vehicle and solubilizing the skin's lipid barrier with chemical penetration enhancers)	NeuroRecovery Technologies (Implants for restoring movement in patients with paralysis)	Delta Brain Inc. (Machine learning and pattern recognition for continuous healthcare monitoring data)
11:15	BioVinc (Diagnostics and therapeutics for osteomyelitis and other bone diseases)	NeuroCore (Rapid, effective, outpatient treatment platform for major depressions)	CureMatch (Computational system for decision support in personalized cancer medicine)
11:30	NanoValent Pharmaceuticals (Nanoparticle delivery system to treat Ewing's <i>Sarcoma</i>)	SilverGens (An early stage company designing a virtual care platform called the eNURZ to increase adherence to long-term therapies in a home setting)	STORM (A collaborative informatics environment that enables community- based hospitals to apply precision medicine to personalized cancer care for their patients)
11:45	Auritec Pharmaceuticals (An R&D company specializing in extended release drug delivery systems)	Quantason (Dual-mode, hybrid, ultrasound-based platform for breast screening and follow-up monitoring)	PhenoTraits (Analytics for predicting non-adherence and managing at-risk patients)



18th Annual SoCalBio Conference

November 4, 2016 . Hilton Long Beach, CA

12:00	Hillhurst Biopharmaceuticals (Targeting debilitating inflammation)	Mastoscopia (Multimodal ultrasound tomography for breast cancer detection)	PersonalRN (A digital health coach, or personal digital RN providing personalized information for patients and their families)
-------	--	---	---

12:15 PM Break



18th Annual SoCalBio Conference

November 4, 2016 . Hilton Long Beach, CA

12:30 PM Luncheon (International Ballroom)

1:00 PM Luncheon Panel Discussion (International Ballroom):

What it Takes to Build a Smarter Healthcare System

Healthcare is one of the greatest challenges facing the US. While the problems are enormous, as evidenced in endless national debates and stream of conferences over the past few years, opportunities also abound to utilize more technologies, innovations and ideas at our disposal to build a smarter healthcare system. But building a smarter healthcare system is not just about using technology to impact patient care. It is also about transforming the relationship between innovators, providers, payors and public policy. This panel discusses how the interaction among these players impacts the transformation of the US Healthcare system and the delivery of the best possible care for each patient.

Speakers:

- **Sid Bhatia, M.S., M.B.A.**, Program Director, Cognitive Disease Mgmt Solutions, IBM Watson Health
- **Adrian Bot, MD, PhD**, VP of Translational Medicine, Kite Pharma
- **Huzefa Neemuchwala, PhD, MBA**, Sr. Director – Data & Informatics Innovation, Medtronic Diabetes
- **Sajjad Yacoob, MD**, Chief Medical Information Officer, Children's Hospital Los Angeles (CHLA)

2:30 PM Break



18th Annual SoCalBio Conference

November 4, 2016 . Hilton Long Beach, CA

2:45 PM Emerging Company Presentations

(Group II)

	<u>Track 1: Atlantic</u>	<u>Track 2: Pacific I</u>	<u>Track 3: Pacific II</u>
	Moderators	Moderators	Moderators
	Mohammad Kondri , MPH, MBA, Trade Commissioner, Life Sciences & Medtech, Consulate General of Canada Courtney Prochnow , PhD, Associate Attorney, Perkins Coie LLP	Mark Siegfried , Business Development, Moss Adams Winn Hong , Sr. Director, Engineering and Business Development, AMI - USC	Steve Goldman , President, World Wide Mind William Lewis , Sr VP, Bolton & Company
2:45	TreThera (Targeted metabolic pathway therapy approach that involves using a rationally-designed combination of two or three drugs from the very start for cancer treatment)	Airware, Inc. (Non-invasive, optical monitoring device to sense interstitial glucose in the skin)	Kumba Health (A digital health company developing a marketplace where providers and patients can connect)
3:00	Afecta Pharmaceuticals (2D/3D computer aided molecular screening technology to redesign existing drug molecules and “fit” them to target drug-able proteins, metabolic pathways, and diseases)	Eyes 4 Lives, Inc. (Device that helps in minimizing digital eye strain and the progression of nearsightedness by correcting improper electronic usage habits)	Care3 (A Los Angeles-based firm developing a digital health platform for care coordination)
3:15	Meditope Biosciences (Developing antibody-drug conjugates for oncological applications)	Cytolumina (A UCLA-spinoff -- now based in Agoura Hills - that is developing a liquid biopsy platform by capturing circulating cancer cells)	Episona (Personalized diagnostics for male infertility using epigenetics)
3:30	Onco Therapies (Developing a technology to remove FoxP3+ regulatory T cells and inhibit tumor growth)	3iDx (Developing an instrument that provides clear identification of a specific microbe strain, including AMR strains, within an hour)	Advanced Prenatal Therapeutics, Inc. (Targeted apheresis to treat preeclampsia)



18th Annual SoCalBio Conference

November 4, 2016 . Hilton Long Beach, CA

3:45	Oxeia Biopharmaceuticals (Therapeutics for brain concussion)	Deton Corp. (An early stage company developing a sample collection device for lower respiratory infections)	ABL Denim (Specialty clothing and wearables for people with disabilities and other diseases)
4:00	Protomer Technologies (A asadana-based pre-clinical stage biotech focused on metabolic diseases)	GNADX (Commercializing a novel iPad-controlled minicube PCR machine)	

4:15 PM Break



18th Annual SoCalBio Conference

November 4, 2016 . Hilton Long Beach, CA

4:30 PM Investor Breakouts:

<u>Meet Angel Investors</u>	<u>Meet Institutional Investors</u>
Atlantic	Pacific I
<p>A group of angel investors located in Southern California will share their investment approaches and market segments of interest to them</p> <p>Moderator:</p> <ul style="list-style-type: none">• Jerry Knotts, President, California Coast Venture Forum <p>Participants:</p> <ul style="list-style-type: none">• TechCoast Angels• Maverick Investor Group• Keiretsu Forum Southern California• Pasadena Angels	<p>Venture and other institutional investors located in Southern California will share their investment strategies and targeted market segments.</p> <p>Moderator:</p> <ul style="list-style-type: none">• Elliot Friedman, Chairman, QI Jian Funds <p>Participants (Southern California and international investors):</p> <ul style="list-style-type: none">• 21st CLI• Adaptive Healthcare• B. Riley & Co.• California Technology Ventures• CliniFlow Technologies• Frontline Bioventures• Fosan• Frontise Fund• Gaotejia Investment Group• Holdus Capital Group• HUAQI Capital Inc.• Jiangsu Crosslink Investment Co• NewCap Partners• Sangel Capital Corp• Takenaka Partners• Theorem Capital

5:30 PM Closing Reception

Join us for food and drinks to celebrate the conclusion of the conference. This is a great opportunity for networking, one last chance to connect in person with fellow entrepreneurs, speakers and participating investors.

7:00 PM Conference Adjourns



18th Annual SoCalBio Conference

November 4, 2016 . Hilton Long Beach, CA

Biographies of BioElectric Medicine Panel Participants



Robert Greenberg, PhD, MD
Chairman
Second Sight Medical Products

Dr. Greenberg was appointed Chairman of the Board in August 2015. He is a founder of the company and served as President, Chief Executive Officer and Director from 1998 until August 2015.

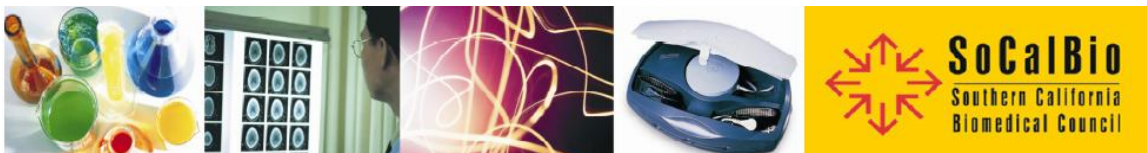
From 1991 to 1997, Dr. Greenberg conducted pre-clinical and clinical trials demonstrating the feasibility of retinal electrical stimulation to elicit visual perceptions.

From 1997 to 1998, he served as a lead reviewer for IDEs and 510(k)s at the Office of Device Evaluation at the U.S. Food and Drug Administration in the Neurological Devices Division.

In 1998, he received his medical and doctorate degrees from The Johns Hopkins School of Medicine.

Dr. Greenberg currently is also the Chairman of the Board of Directors of the Southern California Biomedical Council and the Alfred Mann Foundations.

In addition he sits on the Board of Directors of a public company, Pulse Biosciences, using nanosecond pulses to modulate cellular activity applied to oncology, dermatology and other minimally invasive applications.



18th Annual SoCalBio Conference

November 4, 2016 . Hilton Long Beach, CA



Roy Katso, PhD, Director
Open Innovation &
Funding Partnerships
GlaxoSmithKline

Dr. Katso's responsibilities in the Bioelectronics R&D Unit of GSK include identifying the best talent wherever it exists in the world and building new ecosystems in partnership with academics, technology companies, funding agencies and philanthropic organizations in order to accelerate the realization of the delivery of the potential of Bioelectronic Medicines.

Dr. Katso worked for GSK for 15 years where he has lead multi-disciplinary matrix teams across a number of therapeutic areas and target classes in the early discovery of medicines. Prior to joining the Bioelectronics R&D Unit, he worked in the R&D Strategy where he was accountable for providing decision support and program management for Pharmaceutical leadership on a number of key projects.

Prior to GSK, he spent two years at the University College London as a Ludwig Institute post-doctoral fellow, where his research focused on the role of PI-3 kinases in cancer.

Dr. Katso received his PhD from Oxford University as a Rosina Valerie-Howell Fellow, where he studied the molecular mechanisms of an orphan receptor tyrosine-kinase in ovarian cancer.



18th Annual SoCalBio Conference

November 4, 2016 . Hilton Long Beach, CA



Barry Keenan, PhD, MBA
Chief Technology Officer
CliniFlow Technologies, LLC

Over 20 years of experience in research and medical technology product development. Technical experience is in algorithm, system and software development for medical technology and speech recognition systems.

Previously CTO at the Alfred Mann Foundation for Scientific Research and Director and Technical Fellow at Medtronic and others:

- Vocollect Honeywell
- Acuson Corporation
- Digital Equipment Corporation

Advisory board member for Frost & Sullivan's MindXchange.

Received his BEng (hons) Electronic Systems and Ph.D Biomedical Engineering from University of Ulster N. Ireland. MBA degrees from Queens University, ON and Cornell University.



18th Annual SoCalBio Conference

November 4, 2016 . Hilton Long Beach, CA



Victor Pikov, PhD
Research Platforms Director
Bioelectronics R&D
GlaxoSmithKline

Victor Pikov leads the development of implantable Bioelectronics Research Platforms for preclinical and clinical research at GSK, working collaboratively with multiple industrial, academic and regulatory partners.

Victor has a doctorate degree from Georgetown University, where he studied the spinal control of bladder voiding. His postdoctoral work at the California Institute of Technology was focused on optogenetics.

At the Huntington Medical Research Institutes, Victor's research focused on evaluating neural interfaces for neural stimulation and recording in the PNS and CNS aiming at treating such chronic diseases as infertility, bladder paralysis, bladder spasticity/hyperreflexia, hearing and vision loss, tinnitus, obstructive sleep apnea, and obesity.

Victor holds patent applications for non-invasive microwave-based glucose measurement, neuromodulation for polycystic ovarian syndrome, and a microfluidic nerve cuff interface.



18th Annual SoCalBio Conference

November 4, 2016 . Hilton Long Beach, CA



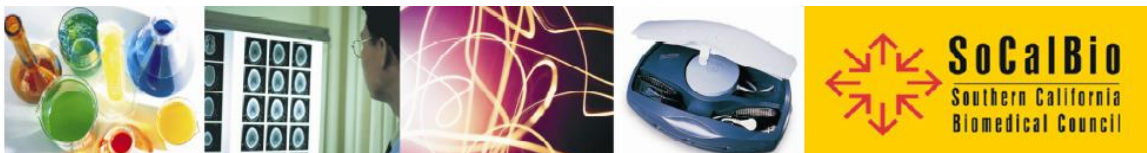
Jerry Schloffman
Chief of Clinical Operations
Valencia Technologies

At Valencia Technologies, Mr. Schloffman has been responsible for generating enthusiasm and support for the use of Valencia's coin-sized neuromodulation device in the treatment of resistant hypertension, including the recruitment of clinical trial sites and the recruitment of patients for the pivotal trial in the United States in 2016.

Mr. Schloffman comes to Valencia Technologies after spending the last 4 years at Cochlear Corporation, the world leader in implantable hearing technologies, where he was responsible for a field and operations staff of approximately 90 people and over 225 million dollars in annual revenue.

Prior to his work at Cochlear Americas, Mr. Schloffman spent 16 years at Advanced Bionics serving in a number of roles including the Vice President of Global Marketing and the Vice President of North American Sales and Service..

Mr. Schloffman holds bachelor's and master's degrees in communication disorders from the University of Northern Colorado.



18th Annual SoCalBio Conference

November 4, 2016 . Hilton Long Beach, CA

Biographies of Smarter Healthcare System Panel Participants



Sid Bhatia, M.S., M.B.A.

Program Director, Cognitive Disease Mgmt Solutions
IBM Watson Health

Sid Bhatia leads business development in IBM Watson Health focusing on cognitive disease management technologies. With a broad software engineering background in application integration and middleware, Sid's education includes an MBA and a Master of Science in Software Engineering. At IBM since 2008, he has been responsible for leading software product offerings.

Prior to joining Watson Health, Sid led a team of product managers for IBM's API economy, security & integration gateway appliances product line, and messaging/integration product portfolio.

Prior to joining IBM, as a managing director he led a team of directors and middleware architects at Charles Schwab and before that led technology consulting teams at Accenture. Sid has been a featured guest speaker at various industry conferences worldwide including Gartner and IBM.



18th Annual SoCalBio Conference

November 4, 2016 . Hilton Long Beach, CA

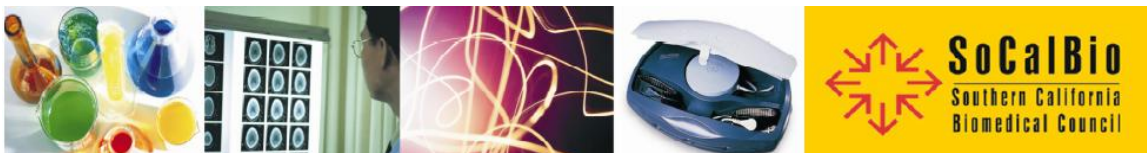


Adrian Bot M.D., Ph.D.
Vice President of Translational Medicine
Kite Pharma

Dr. Bot's background is in basic and translational immunology and oncology. He has expertise in biomolecules, cell-based and small molecule drug development. He has authored or co-authored more than 75 research articles, reviews, book chapters and monographs in basic and applied immunology. Dr. Bot authored patents and patent applications on DNA vaccines, microparticle-based technologies, and immunotherapies for autoimmune, infectious and oncologic diseases. He is the current Editor in Chief of the International Reviews of Immunology and the Section Editor, Immunology and Immunotherapy, of the Journal of Translational Medicine.

Prior to joining Kite, Dr. Bot was Vice President of Research at Mannkind Corporation. Previous appointments include the Scripps Research Institute, Alliance Pharmaceutical Corporation, and Allecure Pharmaceuticals.

He obtained his M.D. at the University of Medicine and Pharmacy in Timisoara, Romania and his Ph.D. in Biomedical Sciences at Mount Sinai School of Medicine in New York.



18th Annual SoCalBio Conference

November 4, 2016 . Hilton Long Beach, CA



Huzefa Neemuchwala, PhD, MBA
Sr. Director – Data & Informatics Innovation
Medtronic Diabetes

At Medtronic Diabetes Service and Solutions Unit, Huzefa Neemuchwala serves as Sr. Director for the Data and Informatics Innovation. Huzefa leads global informatics innovation for Medtronic's big-data initiatives – particularly in partnership with IBM Watson, where machine learning and analytics are being used to solve some of the hardest problems in diabetes management such as prediction of hypoglycemia, analytics for integrated patient management and robust predictive bionic pancreas systems. Huzefa also leads informatics innovation to create new business models for new products and services, powered by data and analytics.

Over the last decade, Huzefa has held both technology and business roles in healthcare informatics at Abbott, McKesson, Hologic and Fujifilm where he worked on mobile, cloud and big-data analytics systems for critical medical applications in diabetes and oncology.

Huzefa earned an MBA from University of California Berkeley and a PhD in Biomedical Engineering (Machine Learning) from the University of Michigan at Ann Arbor. He also earned MS degrees in Electrical Engineering and Computer Sciences from the University of Michigan, and in Biomedical Sciences from the University of Texas Southwestern Medical School, respectively. Huzefa earned his BS in Biomedical Engineering from the University of Mumbai.



18th Annual SoCalBio Conference

November 4, 2016 . Hilton Long Beach, CA



Sajjad Mohammad Yacoob, MD
Chief Medical Information Officer
Children's Hospital Los Angeles (CHLA)

Born in India and raised in Southern California, Dr. Sajjad A. Yacoob received his bachelors of science in biology from UCLA where he graduated cum laude with departmental highest honors in 1985. He went to the East Coast when he was accepted to the Albert Einstein College of Medicine in the Bronx New York in 1987. He graduated from there in 1991 with his medical degree.

He came back to LA where he completed his internship and residency in pediatrics at Children's Hospital Los Angeles from 1991 to 1994. He subsequently was chosen as one of the 2 CHLA chief residents in 1994-1995. He continued his work at CHLA as an attending physician in the division of General Pediatrics starting in 1995. He has ward attending responsibility is on inpatients and maintains an active outpatient practice at the AltaMed Health Services clinic at Children's Hospital Los Angeles.

Dr. Yacoob was the pediatrics clerkship for the Keck school of Medicine of USC from 1997 to 2012. Since July 2011 he has served as Assistant Dean for Student Affairs at the USC Keck School of Medicine where his duties include career guidance and student counseling.

He is actively involved in Children's Hospital Los Angeles' pediatric residency program, RN residency education, and hospital wide patient safety and quality initiatives. Dr. Yacoob is actively involved with and sits on numerous hospital and medical staff committees. He chairs the hospital's Medical Records Committee and the Clinical Information Technology Portfolio Committee. His interests include child safety, medical informatics, medical education and quality improvement/patient safety/patient satisfaction.



18th Annual SoCalBio Conference

November 4, 2016 . Hilton Long Beach, CA

List of Sponsors and Exhibitors

Platinum:

- AMI – USC
- Perkins Coie
- VWR

Gold:

- Moss Adams

Silver:

- Consulate General of Canada in Los Angeles
-

Bronze:

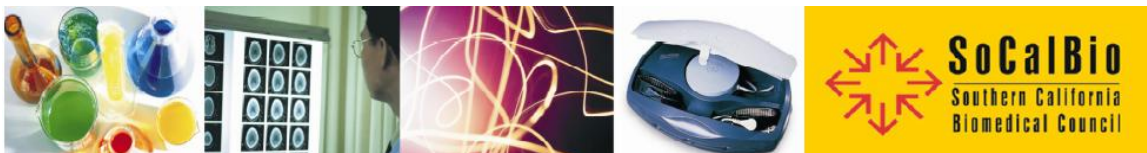
- AON
- Bench International
- Biotechnology Innovation Organization
- CBIZ MhM, LLC
- DxTerity Diagnostics
- Knobbe Martens
- Office Depot
- Stradling

Supporters:

- Bolton & Company
- California Community Colleges, Doing What Matters
- Charles River Labs
- Intertek
- Pasadena Bioscience Collaborative
- PCM Trials
- Santa Clarita Economic Development Corporation
- ShareVault
- TriNet

Media Partners:

- BusinessWire
- ExcelPR Group



**Thanks to the following partners for sponsoring
the SoCalBio Conference**

Platinum Sponsors:

AMI USC

Alfred E. Mann Institute for Biomedical Engineering

PERKINScoie



Gold Sponsor:

MOSS-ADAMS LLP

Certified Public Accountants | Business Consultants

Silver Sponsors:

Canada 

Bronze Sponsors:

